

SUITE,

TIRÉE DU BALLET

LE LAC DES CYGNES.

Tuba

Moderato

No. 1 SCENE

Peter Tschaïkowsky

14 Ob. I.

1 Tuba

12

stringendo

2 Più mosso

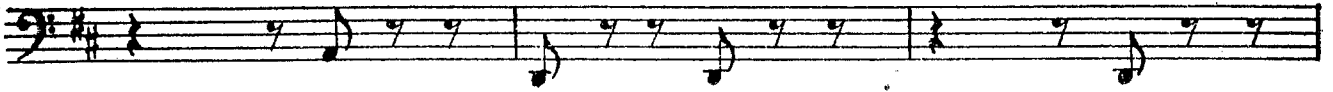
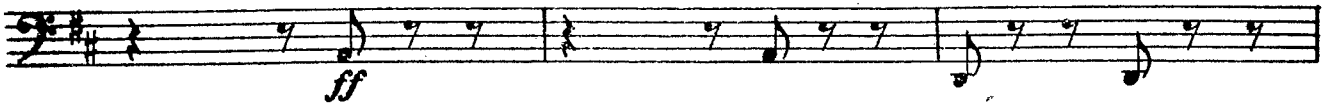
ff

10

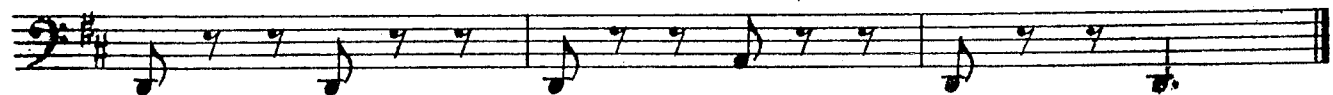
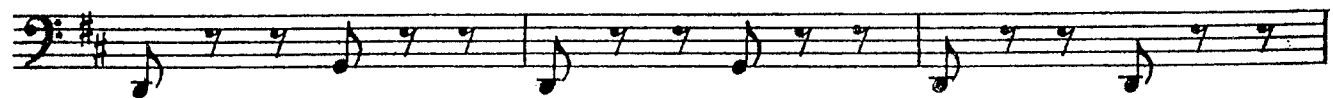
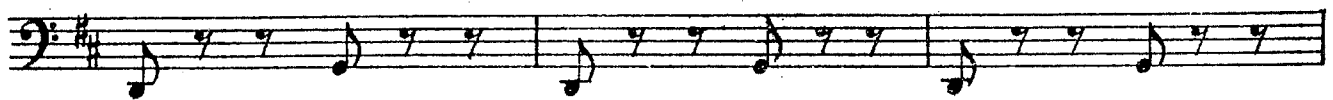
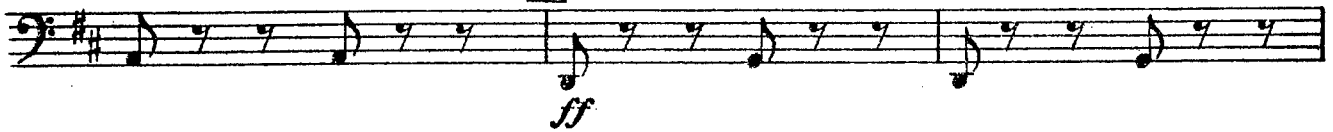
fff

Tuba

3



4



No. 8 MAZURKA

Tuba

Tempo di mazurka

1 *ff*

ff

2 *ff* *p*

2 *p* *ff*

1. 1 | 2. 1 | 3 *ff*

p

4 24 5 16 6 8 7 14

Tuba

8

First musical staff in bass clef with a key signature of one sharp (F#). It begins with a rest followed by a series of eighth notes. Dynamics include *f* and *ff*.

Second musical staff in bass clef with a key signature of one sharp (F#). It features a sequence of eighth notes, some with accidentals.

Third musical staff in bass clef with a key signature of one sharp (F#). It continues the eighth-note pattern with various accidentals.

9

Fourth musical staff in bass clef with a key signature of one sharp (F#). It features a sequence of eighth notes, ending with a rest. Dynamics include *ff* and *p*. A measure number '2' is written above the staff.

Fifth musical staff in bass clef with a key signature of one sharp (F#). It features a sequence of eighth notes, ending with a rest. Dynamics include *p* and *ff*.

3

10

Sixth musical staff in bass clef with a key signature of one sharp (F#). It features a sequence of eighth notes, ending with a rest. Dynamics include *ff*.

Seventh musical staff in bass clef with a key signature of one sharp (F#). It features a sequence of eighth notes, ending with a rest.

Eighth musical staff in bass clef with a key signature of one sharp (F#). It features a sequence of eighth notes, ending with a rest.

11

Ninth musical staff in bass clef with a key signature of one sharp (F#). It features a sequence of eighth notes, ending with a rest. Dynamics include *ff*.

12 Più mosso

Tenth musical staff in bass clef with a key signature of one sharp (F#). It features a sequence of eighth notes, ending with a rest.

Eleventh musical staff in bass clef with a key signature of one sharp (F#). It features a sequence of eighth notes, ending with a rest.

Tuba

Fl. V-ni Cl. Fag.

4 Tuba *ff*

5 *ff* 32 6 7 *ff*

1 7 *ff*

7 15 1. 1 2. 1 8 14 1. 2 2. 2 9 16 10 15

1. 1 2. 1 11 Fl. V-ni

Tuba 3 1. 1

2. 1 12 16 13 14 Fl. V-ni *ff*

14 Tuba *ff*

Tuba

14A

First musical staff in bass clef with a key signature of two sharps (F# and C#). It contains a sequence of eighth notes, followed by a measure with a double fermata and a dynamic marking of *ff* (fortissimo).

Second musical staff in bass clef with a key signature of two sharps, containing a sequence of eighth notes.

15

Third musical staff in bass clef with a key signature of two sharps, containing a sequence of eighth notes with some slurs.

Fourth musical staff in bass clef with a key signature of two sharps, containing a sequence of eighth notes with some slurs.

Fifth musical staff in bass clef with a key signature of two sharps, containing a sequence of eighth notes with some slurs.

Sixth musical staff in bass clef with a key signature of two sharps, containing a sequence of eighth notes and three measures marked with a percentage sign (%).

Seventh musical staff in bass clef with a key signature of two sharps, containing a sequence of eighth notes and three measures marked with a percentage sign (%).

Eighth musical staff in bass clef with a key signature of two sharps, containing a sequence of eighth notes and ending with a double bar line.

Ninth musical staff in bass clef with a key signature of two sharps, containing a sequence of eighth notes with a *Rall.* (Ritardando) marking above the staff and ending with a double bar line.

Tuba

Before Dawn

Max Letellier

$\text{♩} = 100$

A 12 13 11 24 Rit. **B** ^A Tempo 25 4 29 30 **C** 31 32

33 34 35 36 37 38 39 **D** 7 46 6 52

53 **E** 54 55 56 57 58 59 60

61 **F** Molto Rit. 62 63 ^A Tempo 64 65 66 67

68 69 70 71 72 73 **G** 74 6 80 81

p *mp* *mf* *f* *p*